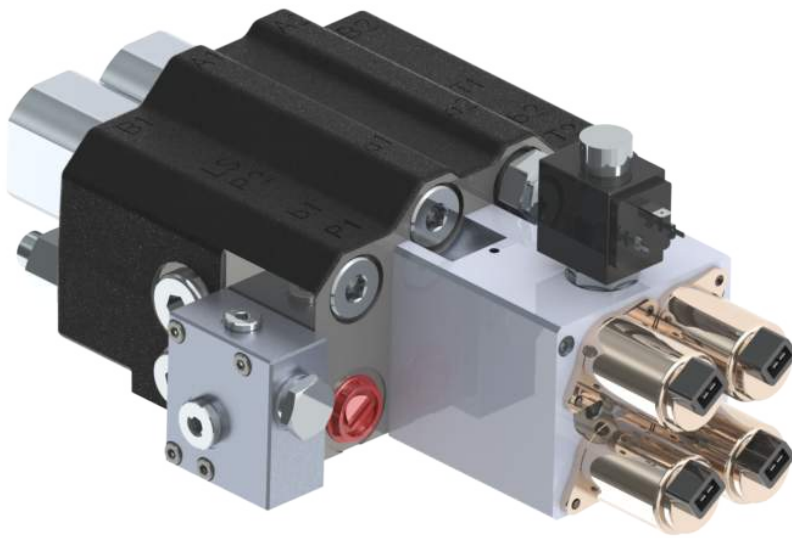


LVM92-EHP

Electro Hydraulic Proportional Front Loader Valve



Index

- Product Features
- General Specifications
- Open Center
- Load Sense
- Hydraulic Specification
- Performance Data
- Spool Options
- Auxiliary Valves
- Proportional Joystick

All the specifications shown in this catalogue are mainly standard configurations. Please contact our Sales Department for other requests.
We reserve the right to introduce improvements and make necessary changes without prior notice.
Akon Hidrolik is not responsible for any damage caused by an incorrect use of the product.

Proportional Electro-Hydraulic Control

General Specifications

Product Features & Benefits

Flow and Maximum Pressure

LVM92-EHP is a monoblock front loader valve for open and closed center systems offering excellent operating characteristics and easy fit for flow rates up to 90 lpm and operating pressures up to 250 bar. The valve offers fully proportional control including the float function regardless of machine load and operating conditions.

Accessories

Accessories
 LS Option
 Adjustable Main Relief Valve
 Load Hold Check Valves in Each Section
 Auxiliary Valves
 Carry-over Option

Controls

Electro-Hydraulic Proportional

Working Conditions

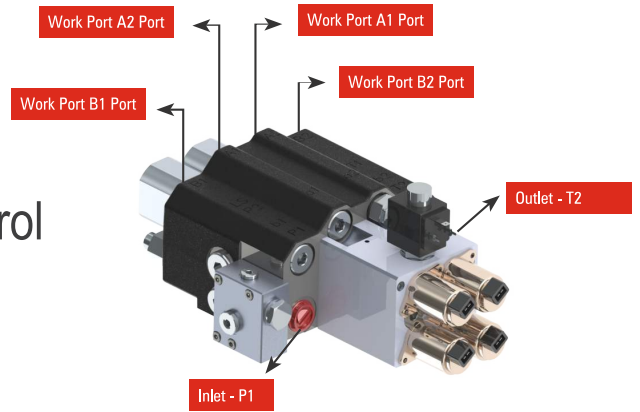
Recommended Oil Viscosity Operating Range	12 cSt to 75 cSt	
Minimum / Maximum Viscosity	10 cSt / 400 cSt	
Recommended Fluid Temperature Range (°C)	-20 to +90	
Ambient Temperature in Operating Conditions (°C)	w/ mechanical controls -30 to +60	w/ electric actuators -30 to +50
Maximum Contamination Level	Class 9 (NAS 1638)	20/18/15 (ISO 4406)

Technical Specifications

Number of Spools	2	
Nominal Flow on Inlet	90 lpm	24 US gpm
Maximum Working Pressure	250 bar	3625 psi
Maximum Back Pressure	10 bar	150 psi
Maximum Internal Leakage	3 cc (100 Bar; 46 cSt, 40 °C)	0,18 in³/m (1450 psi; 46 cSt, 104°F)

For other demands please contact to our sales department.

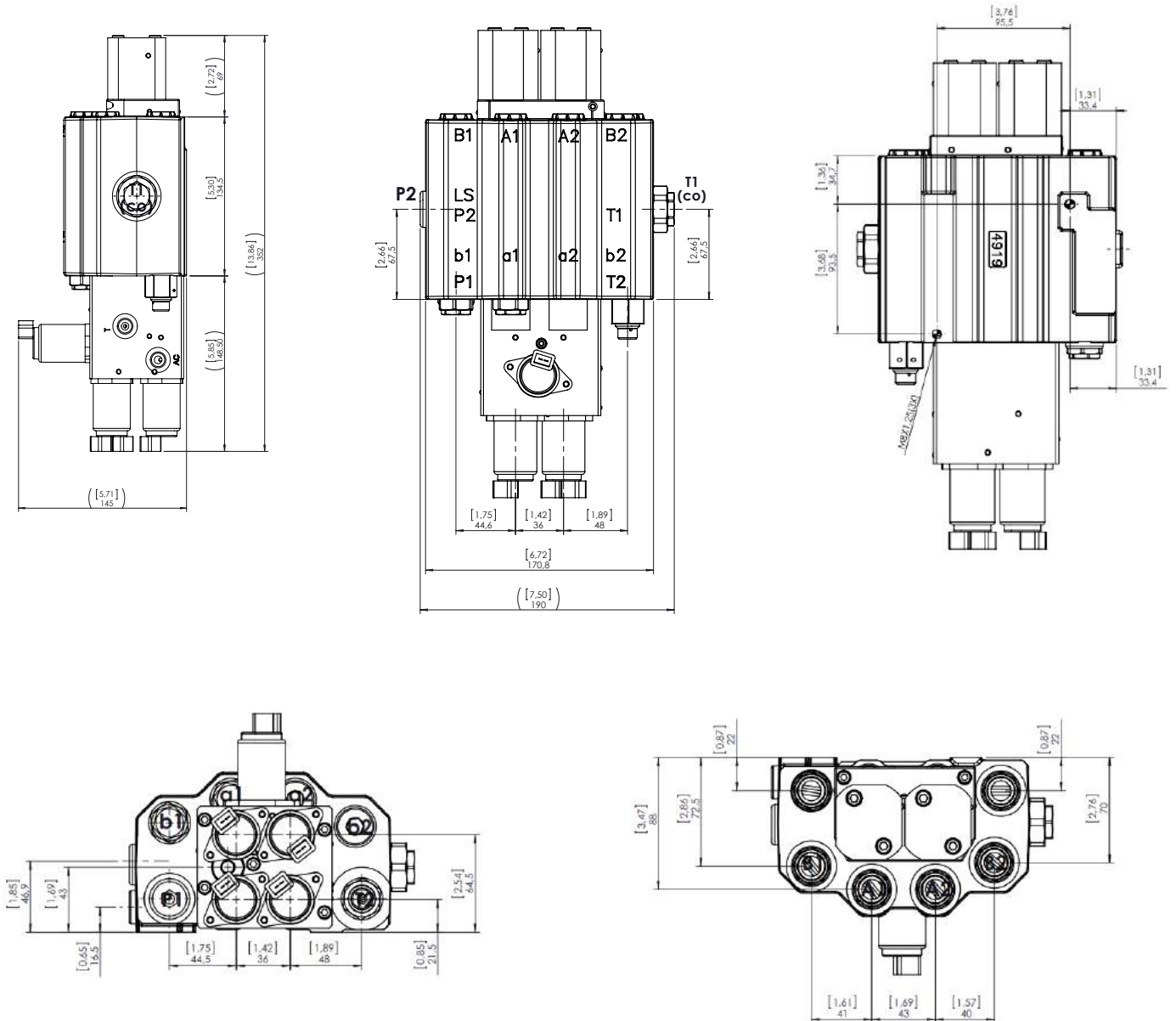
Proportional Electro-Hydraulic Control Open Center



Standard & Optional Threads

Thread	Code	P1 - P2 - T1	A/B	T2	T(CO)
BSP(Standard)	B	G 1/2"	G 1/2"	G 3/4"	G 3/4"

Dimensions

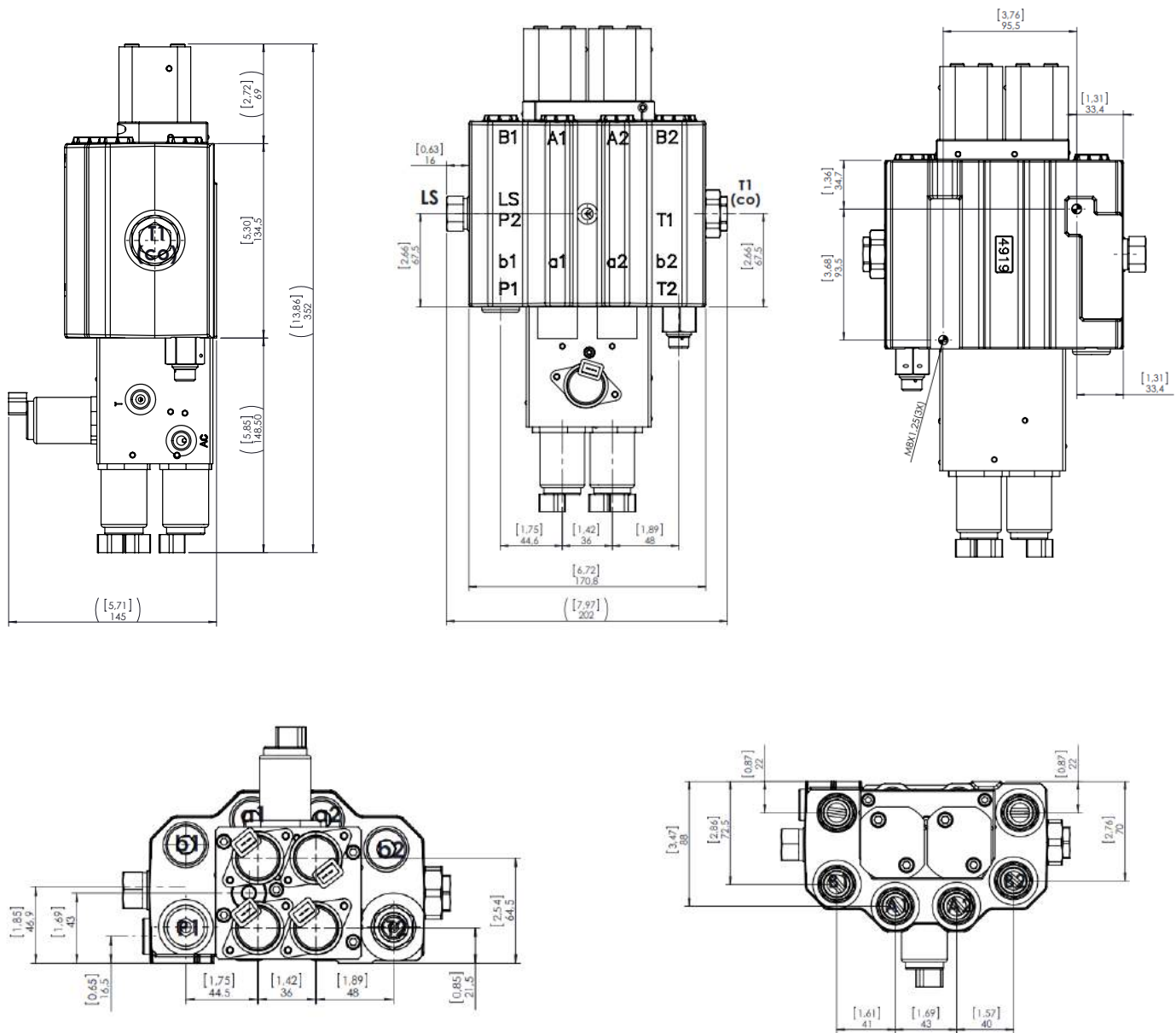


Proportional Electro-Hydraulic Control Load Sense

Standard & Optional Threads

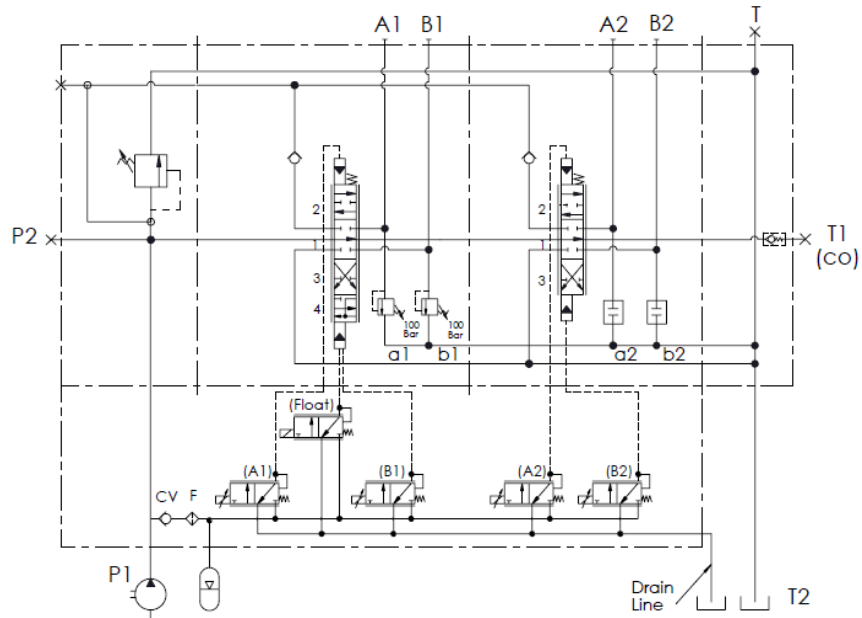
Thread	Code	LS Line	P1 - P2 - T1	A/B	T2	T(CO)
BSP(Standard)	B	G 1/4"	G 1/2"	G 1/2"	G 3/4"	G 3/4"

Dimensions & Weight

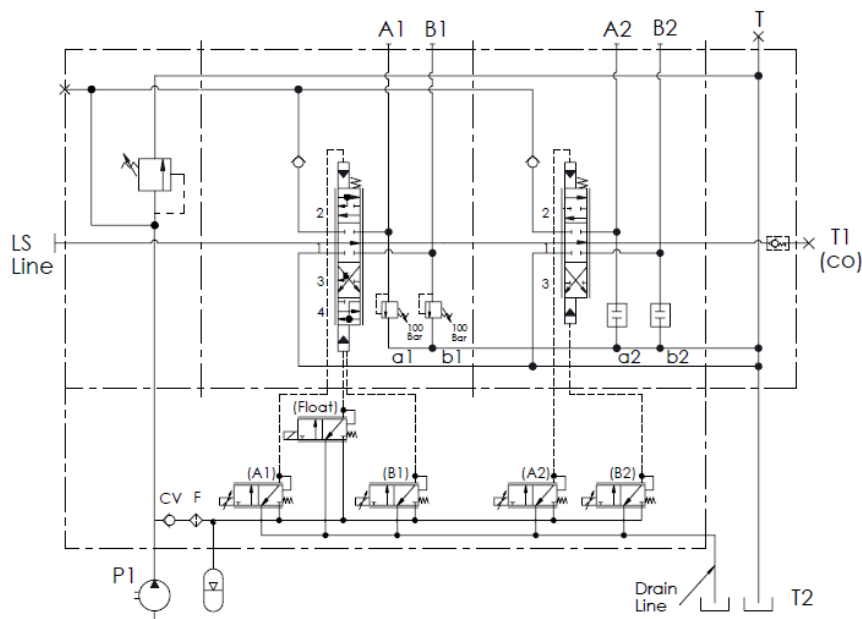


Proportional Electro-Hydraulic Control Hydraulic Circuit

Open Center Version



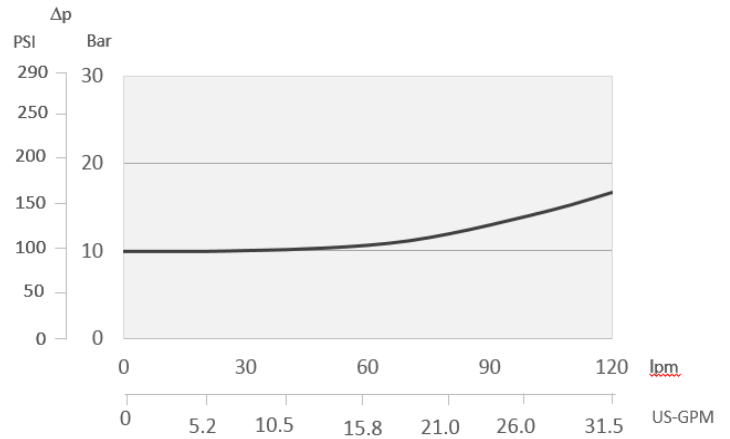
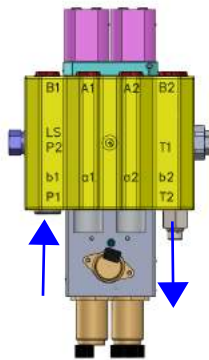
Load Sense Version



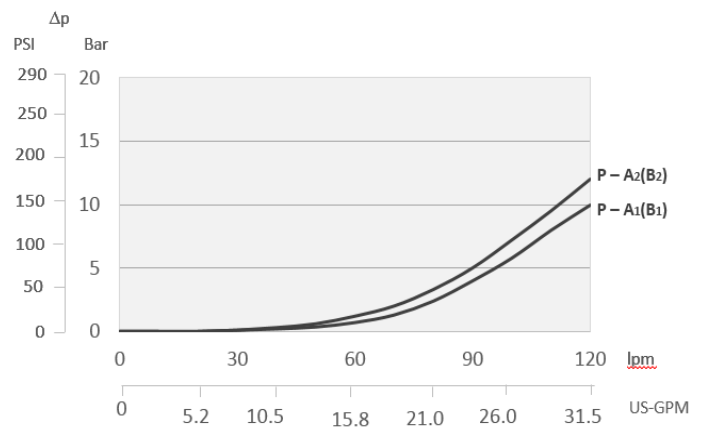
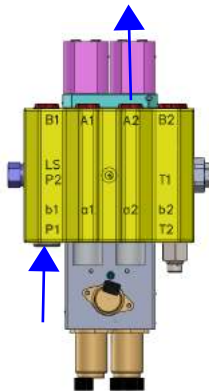
Performance Data

Pressure Drop Curves

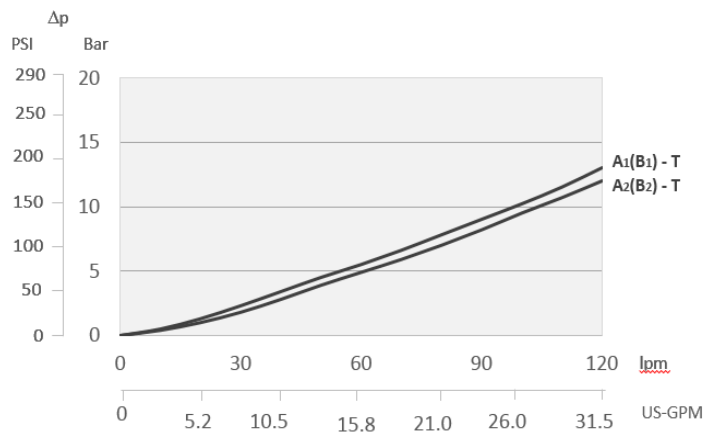
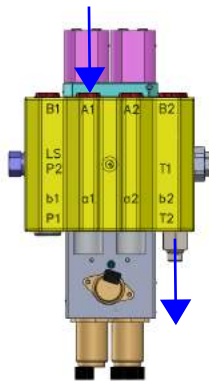
P - T



P - A/B



A/B - T

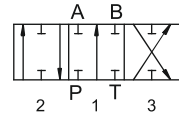


Measured with spool type ST1 and 32 cSt hydraulic oil @ 40°C.

Spool Options

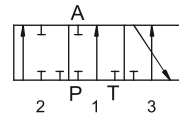
ST1

3 Position, Double Acting



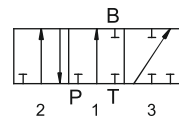
ST2

3 Position, A Port Single Acting



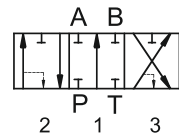
ST3

3 Position, B Port Single Acting



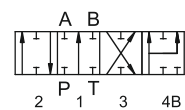
ST23

3 Position, Load Sensing Spool



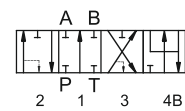
ST10B

4 Position, Double Acting With Regenerative in 4th Position
(4th Position Spool Out)



ST24

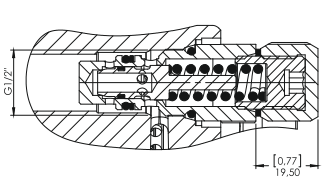
4 Position, Load Sensing Spool with Float on 4th Position
(4th Position Spool Out)



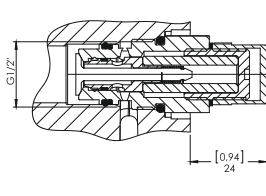
Auxiliary Valves

Auxiliary Valve Options

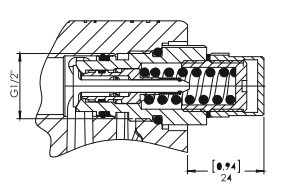
Antishock Valve



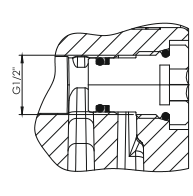
Anticavitation Valve



Antishock & Anticavitation Valve

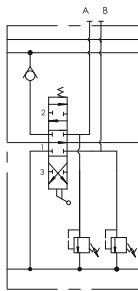


Cavity plug



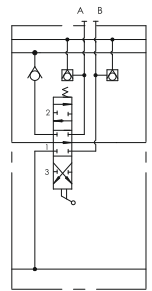
V1

Antishock valves on A & B ports



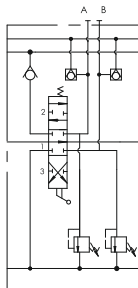
V4

Anticavitation valves on A & B ports



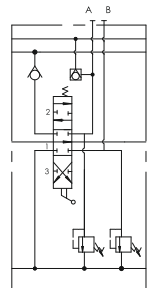
V7

Antishock & anticavitation valves on A & B ports



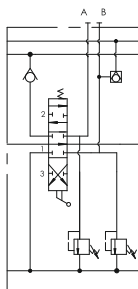
V8

Antishock & anticavitation valve on port A & antishock valve on port B



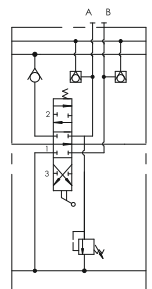
V9

Antishock valve on port A & antishock & anticavitation valve on port B



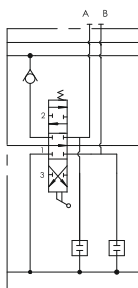
V12

Antishock & anticavitation valve on port A & anticavitation valve on port B



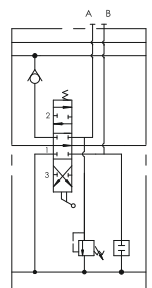
V13

Port relief cavity plug on A & B ports



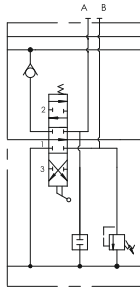
V17

Antishock valve on port A & port relief cavity plug on port B



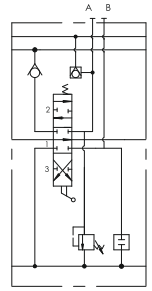
V18

Port relief cavity plug on port A
& antishock valve on port B



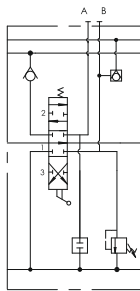
V19

Antishock & anticavitation valve on port A
& port relief cavity plug on port B



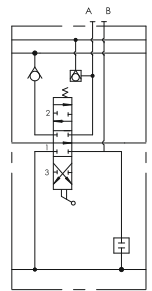
V20

Port relief cavity plug on port A
& antishock & anticavitation valve on port B



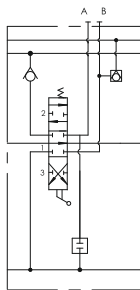
V21

Anticavitation valve on port A
& port relief cavity plug on port B



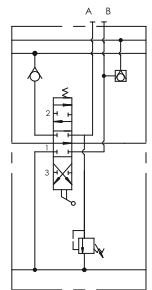
V22

Port relief cavity plug on port A
& anticavitation valve on port B



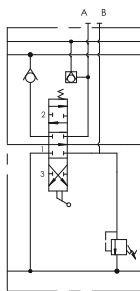
V27

Antishock valve on port A
& anticavitation valve on port B



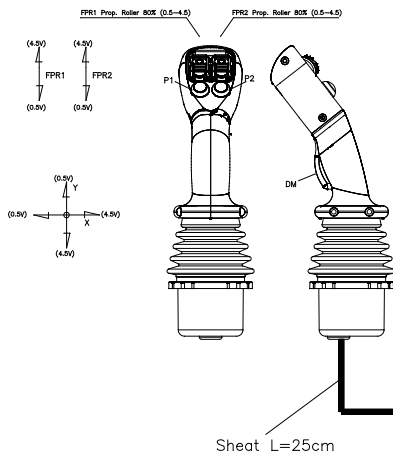
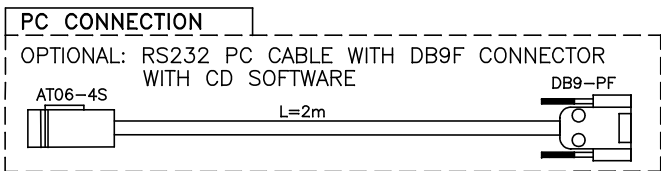
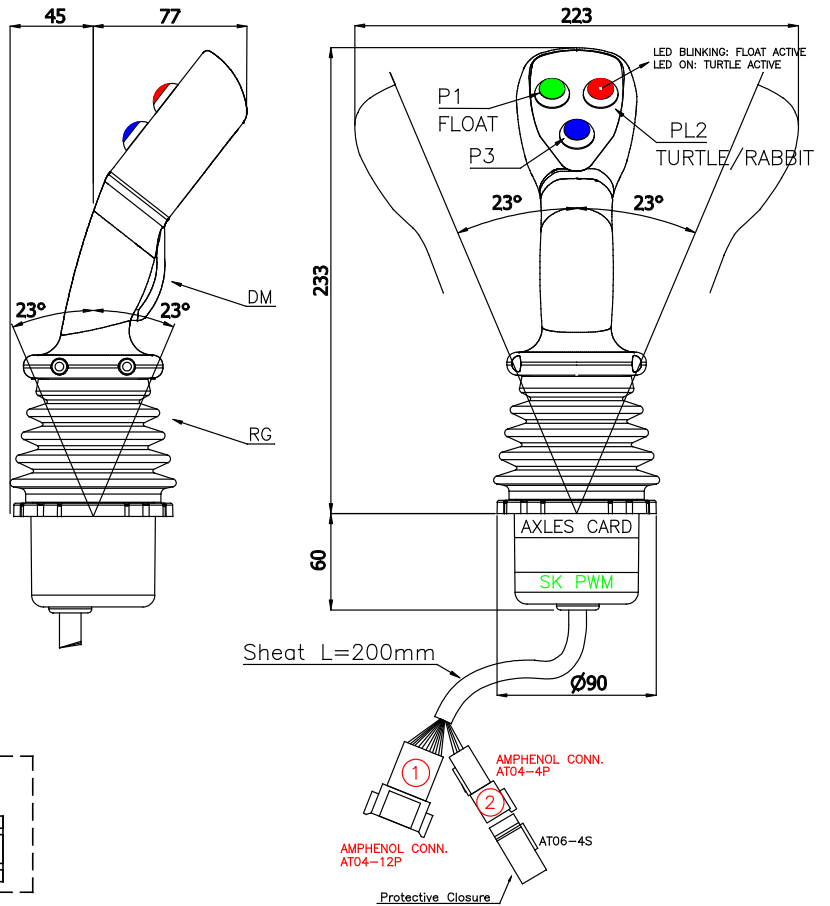
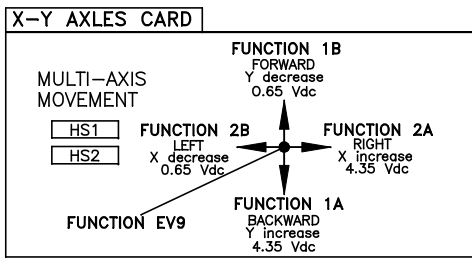
V28

Anticavitation valve on port A
& antishock valve on port B

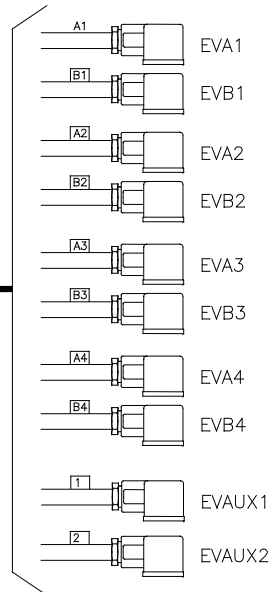


Proportional Joystick

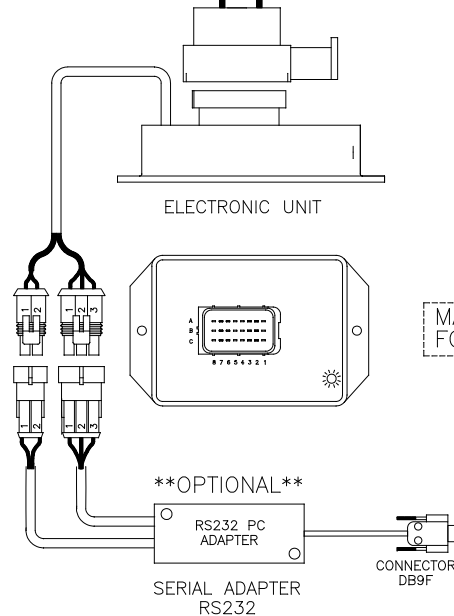
X-Y PWM CURRENT RANGE			
I _{min}	I _{max}	Dither Freq	V _{batt}
100mA	1600mA	100Hz adj.	8-30Vdc



HARNESS FOR ELECTRONIC UNIT



MAXIMUM CURRENT FOR CHANNEL: 3A





www.akon.com.tr

export@akon.com.tr
sales@akon.com.tr